

MACHINERY INFORMATION E01840

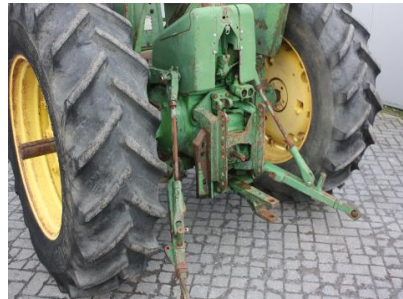


Ref No. : E01840
Brand : JOHN DEERE
Model : 3020

Year : 1966
Hours : 8367.00
Tyres/UC: 90 %

Serial No.: 095151R
Weight : 3500.00 kg
Price : € 9800

John Deere 3020 powershift, Original American mudguard type, power shift transmission which is very rare on a 3020!, 4 cylinder engine with 80 hp, 16.9-34 & 7.50-15 90% Good Year tyres, powersteering, complete 3-point linkage and pto, Hydr. outlet, new seat. Tractor is in very good working order and very clean condition. Very rare collector's item!



Van Dijk Heavy Equipment B.V.
Voltstraat 19
5753 RL Deurne
The Netherlands

Tel. +31 493 313 107
Fax +31 493 316 162
sales@vdhe.com
www.vandijkheavyequipment.com

KvK/CoC 17078066
BTW/VAT/TVA/UST NL802430685B01

All our services, supplies and transactions are subject to the terms of Van Dijk Heavy Equipment B.V. filed with the Chamber of Commerce in Eindhoven, The Netherlands under number 17078066 dated February 27th, 2009. On request we will send a copy free of charge. The information transmitted is intended only for use by the addressee and may contain confidential and/or privileged material.